

UMass Memorial Medical Center

MOMS DO CARE

Resource Guide for Moms By Moms



TABLE OF CONTENTS

	Detoxification Services	2
	Pregnant, Postpartum and Family Residential Programs	2
	Halfway Houses and Therapeutic Communities	5
	Domestic Violence Shelters and Support	8
	Outpatient Substance Abuse and Mental Health Services	9
	Grief and Loss Support	14
	Early Intervention and Other Child Resources	15
	Child Abuse Resources	17
	Harm Reduction and Overdose Prevention Resources	17
	Parent Support Groups and Parenting Classes	18
	Department of Children and Families	20
	Adoption and Family Services	21
	Food Assistance Programs, Food Pantries, Soup Kitchens and Food Banks	22
	Clothing, Furniture and Diaper Donations	27
	Recovery Services	28
	Support Groups	30
	Phone Apps and Online Resources	30
	Housing Resources	31
	Other Services	32



DETOXIFICATION SERVICES

ADCARE HOSPITAL

95 Lincoln St., Worcester, MA 01605
Inpatient: 508-799-9000 | Outpatient: 508-453-3053
www.adcare.com

COMMUNITY HEALTHLINK (CHL)

68 Jacques Ave., Worcester, MA 01610
508-860-1000
www.communityhealthlink.org

SPECTRUM HEALTH SYSTEMS

154 Oak St., Westborough, MA 01581
508-898-1570
www.spectrumhealthsystems.org

SSTAR

386 Stanley St., Fall River, MA 02720
508-676-5671
www.sstar.org



PREGNANT, POSTPARTUM AND FAMILY RESIDENTIAL PROGRAMS

BERYL'S HOUSE

2 Sigourney St., Worcester, MA 01605
774-243-6995
www.communityhealthlink.org



EDWINA MARTIN

678 North Main St., Brockton, MA 02301
508-583-0493
www.edwinamartinhouse.org

EMERSON HOUSE

554 West Falmouth Highway, Falmouth, MA 02574
800-444-1554
www.gosnold.org

ENTRE FAMILIA PROGRAM

211 River St., E. Building, Boston, MA 02126
866-705-2807

FAITH HOUSE

142 Burncoat St., Worcester, MA 01606
508-438-5625
www.communityhealthlink.org

GANDARA RESIDENTIAL SERVICES FOR WOMEN

507 Appleton St., Holyoke, MA 01040
413-540-9881
www.gandaracenter.org

GENESIS II FAMILY CENTER

295 Adams St., Newton, MA 02458
866-705-2807
www.ccab.org

H.A.R.T. HOUSE

365 East St., Building IV, PO Box 477, Tewksbury, MA 01876
866-705-2807

MY SISTER'S HOUSE

89 Belmont Ave., Springfield, MA 01108
413-733-7891
www.bhninc.org

NEW DAY

242 Highland Ave., Somerville, MA 02143
617-628-8188
www.casparinc.org

ORCHARD STREET

17 Orchard St., Leominster, MA 02139
978-537-3109
www.healthrecovery.org

PROJECT COPE WOMEN'S RESIDENTIAL PROGRAM

66 Johnson St., Lynn, MA 01902
781-584-8490
www.bridgewell.org/projectcope

SAGE HOUSE

517 Winter St., Framingham, MA 01702
866-705-2807
www.smoc.org

SERENITY HOUSE

PO Box 344, Hopkinton, MA 03229
508-435-9040
www.smoc.org

STEPPING STONE WOMEN'S PROGRAM

522 North Main St., Fall River, MA 02720
508-674-2788
www.steppingstoneinc.org

979 Pleasant St., New Bedford, MA 02740
508-984-1880
www.steppingstoneinc.org

VISITATION HOUSE

119 Endicott St., Worcester, MA 01610
508-798-8002
www.visitationhouse.org

WATERSHED RECOVERY CENTER FOR WOMEN

332 Birnie Ave., Springfield, MA 01107
413-512-5018
www.chd.org

WOMEN'S VIEW

584 Haverhill St., Lawrence, MA 01841
978-687-1658
<http://psychologicalcenter.com/our-programs/womens-view>



HALFWAY HOUSES AND THERAPEUTIC COMMUNITIES

BEACON HOUSE

53 Beacon St., Greenfield, MA 01301
413-773-4610
www.servicenet.org

BERYL'S HOUSE

2 Sigourney St., Worcester, MA 01605
774-243-6995
www.communityhealthlink.org



CHARLES J. FARIS RECOVERY CENTER (CO-ED)

155 Oak St., Westborough, MA 01581
800-898-1563
www.spectrumhealthsystems.org

FAITH HOUSE

142 Burncoat St., Worcester, MA 01606
508-438-5625
www.communityhealthlink.org

GRANADA HOUSE

70-72 Adamson St., Allston, MA 02134
617-254-2923
www.granadahouse.org

GRACE HOUSE

143 West St., Northampton, MA 01060
866-705-2807
www.chd.org

LINDA FAY GRIFFIN

15 North Hampton St., Worcester, MA 01605
508-755-8990
www.advocates.org

LIVING HOUSE

97 Central St., Suite 212, Lowell, MA 01852
978-656-1882
www.livinghouse.org

MCLEAN CENTER AT FERNSIDE

162 Mountain Rd., Princeton, MA 01541
800-906-9531
www.mclean.harvard.edu/patient/adult/adatp/mcleancenter.php

MCLEAN AT NAUKEAG

216 Lake Rd., Ashburnham, MA 01430
800-230-8764
www.mclean.harvard.edu/patient/adult/adatp/mcleancenter.php

MERIDIAN HOUSE (CO-ED)

408 Meridian St., East Boston, MA 02128
617-569-6050
www.northsuffolk.org

PHOENIX HOUSE (CO-ED)

5 Madison Ave., Springfield, MA 01105
413-733-2178
www.phoenixhouse.org

RHODES HOUSE

5 Rhodes St., Millbury, MA 01527
508-581-7821
www.smoc.org

SHEPHERD HOUSE

22-26 Windermere Rd., Dorchester, MA 02125
617-288-3906
www.vpi.org

SHILOH HOUSE

5 Parley Vale, Boston, MA 02130
857-273-3923
www.voamass.org

STEPPING STONE

506 North Main St., Fall River, MA 02740
508-984-1880
www.steppingstoneinc.org

WOMEN'S HELLO HOUSE

18 Mount Vernon St., Boston, MA 02125
617-326-6484

WOMEN'S VIEW

584 Haverhill St., Lawrence, MA 01841
978-687-1658
<http://psychologicalcenter.com/our-programs/womens-view>



DOMESTIC VIOLENCE SHELTERS AND SUPPORT

ABBY'S HOUSE

51 High St., Worcester, MA 01609
508-756-5486
www.abbyshouse.org

COMMUNITY HEALTHLINK YOUTH & FAMILY SERVICES

275 Belmont St., Worcester, MA 01605
508-791-3261
www.communityhealthlink.org

DAYBREAK- YWCA

1 Salem Sq., Worcester, MA 01608
508-767-2505 | 24-hour Hotline: 508-755-9030
www.ywcacentralmass.org

DOVE

PO Box 690267, Quincy, MA 02269
617-770-4065 | 24-hour Hotline: 617-471-1234
www.dovema.org



ELIZABETH STONE HOUSE

99 Pond Cir., Boston, MA 02130
617-427-9801
www.elizabethstone.org

NEW HOPE (RESPECT)

91 Prescott St., Suite 1, Worcester, MA 01605
508-753-3146 | 24-hour Hotline: 800-323-4673
www.new-hope.org

REACH BEYOND DOMESTIC VIOLENCE

PO Box 540024, Waltham, MA 02454
781-891-0724 | 24-hour Hotline: 800-899-4000
www.reachma.org

RESPOND

PO Box 555, Somerville, MA 02143
617-625-5996 | 24-hour Hotline: 617-440-7267
www.respondinc.org

THE WOMEN'S CENTER

209 Bedford St., Fall River, MA 02720
508-672-1222 | 24-hour Hotline: 508-999-6636
www.thewomenscentersc.org



OUTPATIENT SUBSTANCE ABUSE AND MENTAL HEALTH SERVICES

ADCARE HOSPITAL

95 Lincoln St., Worcester, MA 01605
Inpatient: 508-799-9000 | Outpatient: 508-453-3053
www.adcare.com



ARBOUR HEALTH SYSTEM

411 Chandler St., Worcester, MA 01602
508-799-0688
www.arbourhealth.com

CENTRAL MASS RECOVERY LEARNING COMMUNITY

209 Shrewsbury St., Worcester, MA 01603
508-751-9600
www.centralmassrlc.org

CLEAN SLATE CENTERS

411 Chandler St., Worcester, MA 01602
413-341-1787
www.cleanslatecenters.com/location/worcester-ma

COMMUNITY HEALTHLINK

68 Jacques Ave., Worcester, MA 01610
508-860-1000
www.communityhealthlink.org

CORNERSTONE BEHAVIORAL HEALTH

397 Grove St., Worcester, MA 01605
508-791-3677
www.cornerstonebehavioralhealth.com

COUNSELING & ASSESSMENT CLINIC OF WORCESTER

38 Front St., 5th Floor, Worcester, MA 01608
508-756-5400
51 Union St., Suite G02, Worcester, MA 01608
508-756-2005
www.cacworchester.org

CROSSROADS AGENCY

121 Lincoln St., Worcester, MA 01605
508-795-1611
www.crossroads-agency.com/outpatient-services

EDWARD M. KENNEDY COMMUNITY HEALTH CENTER

19 Tacoma St., Worcester, MA 01605
508-852-1805
www.kennedychc.org

EMERGENCY MENTAL HEALTH (EMH)

UMass Memorial Medical Center – University Campus
55 Lake Ave. North, Worcester, MA 01655
24-hour Hotline: 800-273-7255

EXPERIENCE WELLNESS

121 Lincoln St., Worcester, MA 01605
508-890-0990
www.experiencewellnesscenters.com

FAMILY HEALTH CENTER

26 Queen St., Worcester, MA 01610
508-860-7700
www.fhcw.org

GREEN CLINIC

UMass Memorial Medical Center – Memorial Campus
119 Belmont St., Worcester, MA 01605
508-334-8207

HAHNEMANN FAMILY HEALTH CENTER

UMass Memorial Medical Center – Hahnemann Campus
279 Lincoln St., Worcester, MA 01605
508-334-8830
www.umassmed.edu/fmch/residency/worcester/hahnemann

HARRINGTON HOSPITAL

100 South St., #205, Southbridge, MA 01550
508-765-9771
www.harringtonhospital.org

HARRINGTON HOSPITAL – RECOVERY SERVICES

29 Pine Street, Southbridge MA
508-765-2725
www.harringtonhospital.org/location/behavioral-health-services

ISLAND COUNSELING

108 Grove St., 2nd Floor, Worcester, MA 01605
508-753-3220
www.iccworcester.com

LEARN TO COPE

AdCare Hospital
107 Lincoln St., Worcester, MA 01605
508-738-5148
www.learn2cope.org

LUK INC.

40 Southbridge St., 4th Floor, Worcester, MA 01608
508-762-3000 | 800-579-0000
www.luk.org

MULTICULTURAL WELLNESS CENTER

250 Commercial St., Worcester, MA 01608
508-752-4665
www.multiculturalwellness.org

NEW BEGINNINGS WELLNESS CENTER

1280 Main St., Worcester, MA 01603
508-754-1141
www.newbeginningswc.com

NEWTON SQUARE COUNSELING

338 Highland Ave., Worcester, MA 01602
508-752-5880
www.newtonsquarecounselingcenter.com

PATHWAYS FOR CHANGE, INC.

588 Main St., Worcester, MA 01608
508-852-7600
www.centralmasspfc.org/home

PRIMARY CARE ASSOCIATES

390 Main St., Worcester, MA 01608
508-753-4151

PRIORITY PSYCHIATRY

Vernon Medical Center
95 Vernon St., Building 2, Suite 302, Worcester, MA 01610
508-757-1514
www.prioritypsychiatry.com

SOUTH BAY MENTAL HEALTH

340 Main St., Worcester, MA 01608
508-752-3969
www.southbaymentalhealth.com

SPECTRUM HEALTH SYSTEMS OUTPATIENT SERVICES

585 Lincoln St., Worcester, MA 01605
508-854-3320
www.spectrumhealthsystems.org

WOMEN'S MENTAL HEALTH CLINIC

UMass Memorial Medical Center – Hahnemann Campus
279 Lincoln St., Worcester, MA 01605
508-334-5101
www.umassmemorial.org/womensmentalhealth

YOGA FOR WOMEN AFFECTED BY TRAUMA

Community Healthlink Youth and Family Services
275 Belmont St., Worcester, MA 01604
508-421-4463



GRIEF AND LOSS SUPPORT

CARRIAGE HOUSE GRIEF SUPPORT GROUP FOR CHILDREN

Children's Friend
20 Cedar St., Worcester, MA 01609
508-753-5425
www.childrensfriend.org

COMMUNITY BIRTH/LOSS SUPPORT GROUP

UMass Memorial Medical Center – Memorial Campus
119 Belmont St., Nursing Conference Room, 1st Floor
Worcester, MA 01605
508-421-1399

LEARN TO COPE

AdCare Hospital
107 Lincoln St., Worcester, MA 01605
508-738-5148
www.learn2cope.org

LUK INC.

40 Southbridge St., 4th Floor, Worcester, MA 01608
508-762-3000 | 800-579-0000
www.luk.org

TRINITY LUTHERAN CHURCH

73 Lancaster St., Worcester, MA 01609
508-754-0052

VISITING NURSE ASSOCIATION OF CENTRAL MASS

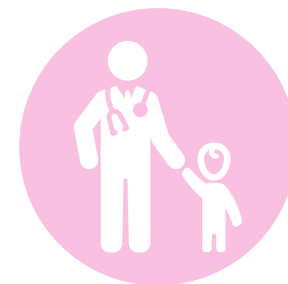
120 Thomas St., Worcester, MA 01608
508-751-6885
www.vnacarenetwork.org

WORCESTER GRIEF RECOVERY AFTER A SUBSTANCE PASSING CHAPTER (GRASP)

Our Lady of the Angels Church
1222 Main St., Worcester, MA 01603
508-755-5041 | 508-248-5622
www.grasphelp.org

YOU ARE NOT ALONE (YANA)

Immaculate Conception Church (lower church hall)
353 Grove St., Worcester, MA 01609
508-752-4200



EARLY INTERVENTION AND OTHER CHILD RESOURCES

CATHOLIC CHARITIES

10 Hammond St., Worcester, MA 01610
508-798-0191
www.cccworc.org

CRITERION WORCESTER EARLY INTERVENTION PROGRAM

338 Plantation St., Worcester, MA 01604
480 Main St., Holden, MA 01520
508-770-0089
www.criterionchild.com

MASSACHUSETTS SOCIETY FOR THE PREVENTION OF CRUELTY TO CHILDREN (MSPCC)

Playgroup/Prevention Program
335 Chandler St., Worcester, MA 01602
508-753-2967
www.mspcc.org

SEVEN HILLS

799 West Boylston St., Worcester, MA 01606
508-796-1850
www.sevenhills.org/programs/child-care-resources

SOUTH BAY EARLY INTERVENTION

540 Park Ave., Worcester, MA 01602
774-823-1500
www.southbaymentalhealth.com/services-provided/early-childhood-services/7

THOM WORCESTER AREA EARLY INTERVENTION AND FAMILY SUPPORT PROGRAM

239 Mill St., Worcester, MA 01602
774-243-6611
www.thomchild.org/worcester.htm

WORCESTER FAMILY PARTNERSHIP

130 Leeds St., Worcester, MA 01606
508-799-3136

YOU, INC.

81 Plantation St., Worcester, MA 01604
508-849-5600
www.youinc.org



CHILD ABUSE RESOURCES

ADVOCACY CENTER FOR CHILDREN

Junior League of Worcester
71 Pleasant St., Worcester, MA 01609
508-799-6114
www.worcesterda.com/cac

FAMILY VISITATION CENTER

New Hope
50 Franklin St., Worcester, MA 01608
508-752-8709
www.new-hope.org/supervised-visitation

MASS SOCIETY FOR THE PREVENTION OF CRUELTY TO CHILDREN (MSPCC)

335 Chandler St., Worcester, MA 01602
508-753-2967
www.mspcc.org

WORCESTER YOUTH GUIDANCE CENTER

75 Belmont St., Worcester, MA 01604
508-791-0168 | Email: wygc@ma.ultranet.com
www.communityhealthlink.org/chl



HARM REDUCTION AND OVERDOSE PREVENTION RESOURCES

AIDS PROJECT WORCESTER – OPIOID OVERDOSE PREVENTION/NARCAN (NALOXONE) TRAINING

85 Green St., Worcester, MA 01604
508-755-3773
www.aidsprojectworcester.org





PARENT SUPPORT GROUPS AND PARENTING CLASSES

CENTER FOR LIVING AND WORKING

484 Main St., Worcester, MA 01608
508-798-0350
www.centerlw.org

LUK INC.

40 Southbridge St., 4th Floor, Worcester, MA 01608
508-762-3000 | 800-579-0000
www.luk.org

MASSACHUSETTS SOCIETY FOR THE PREVENTION OF CRUELTY TO CHILDREN (MSPCC)

335 Chandler St., Worcester, MA 01605
508-753-2967
www.mspcc.org

MOMS DO CARE

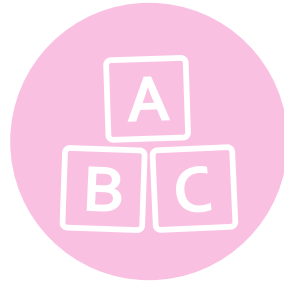
UMass Memorial Medical Center – Memorial Campus
119 Belmont St., Worcester, MA 01605
508-334-8207

MOTHERS OF PRESCHOOLERS (MOPS)

First Assembly of God Church
30 Tyler-Prentice Rd., Worcester, MA 01605
508-852-5733

PARENTS HELPING PARENTS

800-632-8188



PERNET FAMILY HEALTH SERVICE, INC.

237 Millbury St., Worcester, MA 01610
508-755-1228
www.pernetfamilyhealth.org

PROBLEM PREGNANCY

495 Pleasant St., Worcester, MA 01609
508-792-1125
www.problempregnancy.org

SOUTH BAY EARLY CHILDHOOD

548 Park Ave., Suite B, Worcester, MA 01603
774-823-1500
www.southbaymentalhealth.com/services-provided/services

THOM WORCESTER AREA EARLY INTERVENTION AND FAMILY SUPPORT PROGRAM

239 Mill St., Suite BB, Worcester, MA 01602
508-845-8466
www.thomchild.org/worcester.htm

WORCESTER COMMUNITY CONNECTIONS AFFILIATED WITH YOU, INC.

484 Main St., Worcester, MA 01608
508-796-1417

WORCESTER COMMUNITY CONNECTIONS AFFILIATED WITH YOU, INC. IN COLLABORATION WITH SOUTH BAY

548 Park Ave., Worcester, MA 01603
508-795-1417

WORCESTER FAMILY PARTNERSHIP

130 Leeds St., Worcester, MA 01606
508-799-3136
www.worcesterschools.org/worcester-family-partnership

WORCESTER HEALTHY LIVING INITIATIVE

Edward M. Kennedy Community Health Center
631 Lincoln St., Worcester, MA 01605
508-854-2124

YOU, INC.

484 Main St., Worcester, MA 01608
508-796-1411
www.youinc.org

81 Plantation St., Worcester, MA 01604
508-849-5600
www.youinc.org

YOUNG PARENT PROGRAM

YWCA 1 Salem Sq., Worcester, MA 01608
508-767-2502



DEPARTMENT OF CHILDREN AND FAMILIES

CENTRAL OFFICE

Linda S. Spears, Commissioner
600 Washington St., Boston, MA 02111
617-748-2400
www.mass.gov/eohhs/gov/departments/dcf

WORCESTER EAST AREA OFFICE

151 West Boylston Dr., Worcester, MA 01606
508-793-8000

WORCESTER WEST AREA

13 Sudbury St., Worcester, MA 01609
508-929-2000



ADOPTION AND FAMILY SERVICES

ASCENTRIA ADOPTION SERVICES

11 Shattuck St., Worcester, MA 01605
774-243-3962
www.ascentria.org/i-want-to-adopt

ASCENTRIA CARE ALLIANCE

14 E. Worcester St., #300, Worcester, MA 01604
774-243-3900
www.ascentria.org

CATHOLIC CHARITIES

10 Hammond St., Worcester, MA 01610
508-798-0191
www.ccworc.org

CHILD & FAMILY SERVICES

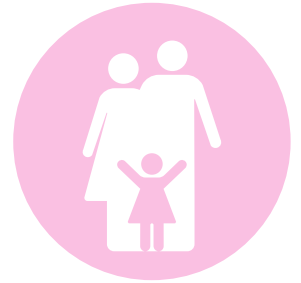
55 Cedar St., #2, Worcester, MA 01609
508-753-1260
www.child-familyservices.org/worcester

CHILDREN'S FRIEND INC.

20 Cedar St., Worcester, MA 01609
508-753-5425
www.childrensfriend.org

DARE FAMILY SERVICES

1241 Main St., Worcester, MA 01603
508-755-7100
www.darefamily.org



DEPARTMENT OF CHILDREN AND FAMILIES

13 Sudbury St., Worcester, MA 01609
508-929-2000
www.mass.gov/eohhs/gov/departments/dcf

JEWISH FAMILY SERVICES ADOPTION SERVICES

646 Salisbury St., Worcester, MA 01609
508-755-3101
www.jfcsboston.org

MASSACHUSETTS SOCIETY FOR THE PREVENTION OF CRUELTY TO CHILDREN (MSPCC)

335 Chandler St., Worcester, MA 01602
508-753-2967
www.msppcc.org



FOOD ASSISTANCE PROGRAMS, FOOD PANTRIES, SOUP KITCHENS AND FOOD BANKS

AIDS PROJECT WORCESTER

85 Green St., Worcester, MA 01604
508-755-3773, extension 16

AUBURN YOUTH AND FAMILY SERVICES

21 Pheasant Ct., Auburn, MA 01501
508-832-5707

CATHOLIC CHARITIES FOOD PANTRY

10 Hammond St., Worcester, MA 01610
508-860-2237
www.ccworc.org

CENTRO LAS AMERICAS

11 Sycamore St., Worcester, MA 01608
508-798-1900, extension 241

CHIP IN FOOD PANTRY

37 Main St., Charlton, MA 01507
508-248-3292

DEPARTMENT OF TRANSITIONAL ASSISTANCE

13 Sudbury St., Worcester, MA 01609
508-767-3100
www.mass.gov/eohhs/gov/departments/dta

FOUNTAIN OF LIFE

23 Coral St., Worcester, MA 01605
508-791-5555

FRIENDLY HOUSE PANTRY

36 Wall St., Worcester, MA 01604
508-755-4362
www.friendlyhousema.org

GOOD SAMARITAN FOOD PANTRY

39 Piedmont St., Worcester, MA 01610
774-253-1619

GREAT BROOK VALLEY FOOD PANTRY

176 Tacoma St., Worcester, MA 01605
508-852-8944

GREEN ISLAND

50 Canton St., Worcester, MA 01610
508-753-4661

JEREMIAH'S INN FOOD PANTRY

1059 Main St., Worcester, MA 01603
508-755-6403

JOHN STREET BAPTIST CHURCH

43 John St., Worcester, MA 01609
508-753-4991

LOAVES AND FISH PANTRY UNITARIAN UNIVERSALIST CHURCH

90 Holden St., Worcester, MA 01606
508-853-1942

MARY QUEEN OF THE ROSARY FOOD PANTRY

60 Maple St., Spencer, MA 01562
508-885-3332

**MOUNT CARMEL OUTREACH MINISTRY FOOD PANTRY
(FRIENDLY HOUSE)**

24 Mulberry St., Worcester, MA 01605
508-791-6139

THE MUSTARD SEED

93 Piedmont St., Worcester, MA 01609
508-754-7098

ORTHODOX FOOD CENTER – ST. SPYRIDON CATHEDRAL

102 Russell St., Worcester, MA 01609
508-791-7326

OXFORD FOOD SHELF

4 Maple Rd., Oxford, MA 01540
508-987-1062

PERNET FAMILY HEALTH SERVICE, INC.

237 Millbury St., Worcester, MA 01610
508-755-1228
www.pernetfamilyhealth.org

PLUMLEY VILLAGE FOOD PANTRY (FRIENDLY HOUSE)

16 Laurel St., Worcester, MA 01608
508-799-6981
www.friendlyhouseema.org

QUINSIGAMOND VILLAGE COMMUNITY CENTER

16 Greenwood St., Worcester, MA 01607
508-755-7481

REVIVAL CHURCH – FOUNTAIN OF LIFE

23 Coral St., Worcester, MA 01604
508-791-5555

RUTLAND FOOD PANTRY

240 Main St., Rutland, MA 01543
508-886-2206

SALVATION ARMY CITADEL

640 Main St., Worcester, MA 01608
508-756-7191

SOUTH WORCESTER NEIGHBORHOOD CENTER

47 Camp St., Worcester, MA 01603
508-757-8344

SOUTH WORCESTER NEIGHBORHOOD CENTER – GREEN ISLAND

50 Canton St., Crompton Park, Worcester, MA 01610
508-753-4661

SOUTH WORCESTER NEIGHBORHOOD CENTER – LAKESIDE CENTER

54 Circuit Ave. South, Apt.1, Worcester, MA 01603
508-792-5750

SOUTHBRIDGE FOOD SHARE INC.

79 Elm St., Southbridge, MA 01550
508-764-6583

ST. ANTHONY’S PANTRY – SAINT VINCENT DE PAUL

Sacred Heart of Jesus Christ
596 Cambridge St., Worcester, MA 01610
508-753-2555

ST. PETER’S CHURCH – SAINT VINCENT DE PAUL

929 Main St., Worcester, MA 01610
508-752-4674

ST. PAUL’S OUTREACH

19 Chatham St. Worcester, MA 01609
508-791-8455

ST. VINCENT DE PAUL SOCIETY – ST. MARY’S CHURCH

263 Hamilton St., Southbridge, MA 01550
508-764-3226

WEBSTER DUDLEY FOOD SHARE INC. – UNITED CHURCH OF CHRIST

4 Church St., Webster, MA 01570
508-943-9171

WESLEY UNITED METHODIST CHURCH CARTY CUPBOARD

114 Main St., Worcester, MA 01608
508-799-4191

WEST BOYLSTON FOOD PANTRY

26 Central St., West Boylston, MA 01583
508-835-4462

WIC PROGRAM

199 Chandler St., Worcester, MA 01609
508-796-7000

www.mass.gov/eohhs/consumer/basic-needs/food/wic/participants/offices/wic-offices-central.html

KIDS MEAL SITES

BOYS AND GIRLS CLUB KIDS CAFÉ

65 Tainter St., Worcester, MA 01610
508-753-3377

SALVATION ARMY/KIDS FEAST

640 Main St., Worcester, MA 01603
508-756-7191, extension 230

USDA FREE SUMMER MEAL PROGRAM

Project Bread
800-645-8333



CLOTHING, FURNITURE AND DIAPER DONATIONS

CATHOLIC CHARITIES

10 Hammond St., Worcester, MA 01610
508-798-0191

DONATIONS CLEARING HOUSE OF CENTRAL MASSACHUSETTS HOUSING ALLIANCE, INC. (CMHA)

6 Institute Rd., Worcester, MA 01609
508-752-5519



DRESS FOR SUCCESS WORCESTER

484 Main St., Suite 101, Worcester, MA 01608
508-796-5660 | Email: coordinator@dressforsuccessworcester.org

FRIENDLY HOUSE, INC.

36 Wall St., Worcester, MA 01604
508-755-4362

LITTLE STORE/THE REFUGEE APOSTOLATE

242 Canterbury St., Worcester, MA 01603
508-831-7455

MARIE'S MISSION: A DIAPER OUTREACH PROGRAM

3rd Saturday of each month from 10 am – noon
St. Michaels on the Heights Episcopal Church
340 Burncoat St., Worcester, MA 01606
www.stmichaelsontheheights.org/maries-mission

PROBLEM PREGNANCY

495 Pleasant St., Worcester, MA 01609
508-792-1125
www.problempregnancy.org



RECOVERY SERVICES

DEVINE RECOVERY CENTER – PEER RECOVERY SUPPORT CENTERS (DPH)

70 Devine Way, South Boston, MA 02127
857-496-1384
www.gavinfoundation.org/programs/devine-recovery-center

EVERYDAY MIRACLES – PEER RECOVERY SUPPORT CENTERS (DPH)

25 Pleasant Street, Worcester, MA 01601
508-799-6221
www.everydaymiraclesprsc.org

HOPE FOR HOLYOKE RECOVERY SUPPORT CENTER

98 Suffolk Street, Holyoke, MA 01040
413-561-1020
<https://gandaracenter.org/hope-for-holyoke>

NEW BEGINNINGS

487 Essex Street, Lawrence, MA 01840
978-655-3674
www.newbeginningsprc.org

A NEW WAY RECOVERY SUPPORT CENTER

85 Quincy Avenue, Quincy, MA 02169
617-302-3287
<http://baystatecs.org>

PIER RECOVERY SUPPORT CENTER

209 Main Street, Hyannis, MA 02601
508-827-6150

RECOVER PROJECT – PEER RECOVERY SUPPORT CENTERS (DPH)

68 Federal Street, Greenfield, MA 01301
413-774-5489
www.recoverproject.org

THE RECOVERY CONNECTION – PEER RECOVERY SUPPORT CENTERS (DPH)

31 Main Street, Marlborough, MA 01752
508-485-0298
www.therecoveryconnection.org

STAIRWAY TO RECOVERY – PEER RECOVERY SUPPORT CENTERS (DPH)

142 Crescent Street, Brockton, MA 02301
774-257-5660

STEPROX – PEER RECOVERY SUPPORT CENTERS (DPH)

9 Palmer Street, Roxbury, MA 02119
617-442-7837
<https://mydorchester.org/STEProx-Recovery-Support-Center>



SUPPORT GROUPS

ALCOHOLICS ANONYMOUS (AA)

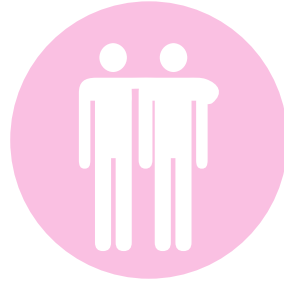
100 Grove St., Worcester, MA 01605

508-752-9000

www.aaworcester.org

Online Meetings: www.aa-intergroup.org/directory.php

Phone Meetings: <http://e-aa.org/links>



CENTRAL MASSACHUSETTS AREA NARCOTICS ANONYMOUS (NA)

25 Francis St., Worcester, MA 01605

866-NA-HELPU

www.centralmassna.org

MOMS DO CARE

UMass Memorial Medical Center – Memorial Campus

119 Belmont St., Worcester, MA 01605

508-334-8207

SMART RECOVERY MEETINGS

AdCare Hospital

95 Lincoln St., Worcester, MA 01605

www.smartrecovery.org



PHONE APPS AND ONLINE RESOURCES

DBT SELF-HELP (APP)

www.dbtselfhelp.com/html/dbt_self-help.html

ONLINE RECOVERY SUPPORT (ONLINE MEETINGS)

- www.aa-intergroup.org
- www.marijuana-anonymous.org
- www.smartrecovery.org
- www.facebook.com/youngpeopleinrecovery

PROCHANGE.COM

www.prochange.com

PTSD COACH (APP)

www.ptsd.va.gov/public/materials/apps/PTSDCoach.asp

STRESS TRACKER

www.otswithapps.com/2012/06/25/stress-tracker-app-for-ios-free-and-android

TEXT4BABY

www.text4baby.org



HOUSING RESOURCES

ABBY'S HOUSE

52 High St., Worcester, MA 01609

508-756-5486

www.abbyshouse.org



CENTRAL MASS HOUSING ALLIANCE

510 Cambridge St., Worcester, MA 01610

508-752-5519

www.cmhaonline.org

MASSACHUSETTS COALITION FOR THE HOMELESS

781-595-7570

www.mahomeless.org

MASSACHUSETTS DEPARTMENT OF HOUSING AND COMMUNITY DEVELOPMENT (DHCD)

617-573-1100
www.mass.gov/hed/economic/eohed/dhcd

MASS HOUSING

617-854-1000
www.masshousing.com

RCAP SOLUTIONS

12 E. Worcester St., Worcester, MA 01608
800-488-1969

WORCESTER COMMUNITY ACTION COUNCIL, INC. (WCAC)

484 Main St., 2nd Floor, Worcester, MA 01608
508-754-1176 | 508-754-0203
www.wcac.net

WORCESTER HOUSING AUTHORITY

40 Belmont St., Worcester, MA 01605
508-635-3000
www.worcester-housing.com



OTHER SERVICES

AMERICAN ADDICTION CENTERS

Brandy Bates 508-431-0172

BUREAU OF SUBSTANCE ABUSE (BSAS)

800-327-5050
www.mass.gov/dph/bsas



DEPARTMENT OF TRANSITIONAL ASSISTANCE

13 Sudbury St., Worcester, MA 01608
508-767-3100
www.mass.gov/eohhs/gov/departments/dta

MASSACHUSETTS CHILD PSYCHIATRY ACCESS PROJECT (MCPAP)

855-MOM-MCPAP
www.mcpapformoms.org

MASSACHUSETTS REHABILITATION COMMISSION

359 Main St., Worcester, MA 01608
508-754-1757
www.mass.gov/eohhs/gov/departments/mrc

PLANNED PARENTHOOD

470 Pleasant St., Worcester, MA 01609
800-258-4448
www.plannedparenthood.org/health-center/massachusetts/worcester/01609/central-massachusetts-health-center-2660-90610

WORCESTER HEALTH START INITIATIVE FOR SUPPORT AND ADVOCACY

Various Locations
508-854-2124

WORCESTER WIC PROGRAM

199 Chandler St., Worcester, MA 01609
508-762-5700
www.womeninfantschildrenoffice.com/worcester-wic-clinic-wc3974

WORK FORCE CENTRAL CAREER CENTER

340 Main St., Worcester, MA 01608
508-799-1600
www.workforcecentralma.org



Patients and families trust UMass Memorial Medical Center as the region's leading academic medical center, committed to improving the health of our communities in Central Massachusetts. With our partner, the University of Massachusetts Medical School, we are committed to excellence in primary and specialty care, community service, teaching and research. The Medical Center offers advanced technology and support services for patients and families, providing the region with specialists renowned for their expertise in caring for adults and children. Visit www.umassmemorial.org. General information: 508-334-1000



UMass Memorial Health Care is the largest not-for-profit health care system in Central Massachusetts with more than 12,000 employees and 1,700 physicians, many of whom are members of UMass Memorial Medical Group. Our member hospitals and entities include UMass Memorial – HealthAlliance-Clinton Hospital, UMass Memorial – Marlborough Hospital, UMass Memorial Medical Center and UMass Memorial – Community Healthlink, our behavioral health agency. With our teaching and research partner, the University of Massachusetts Medical School, our extensive primary care network and our cancer, diabetes, heart and vascular, orthopedic and surgery programs, UMass Memorial delivers safe, high-quality and compassionate care. Visit www.umassmemorialhealthcare.org.

To find a physician in your community, call 855-UMASS-MD (855-862-7763).

MOMS DO CARE

The Moms Do Care Project is a program for pregnant women 18 years and older, who have either used opioids in the past 12 months or are at risk for relapse. Our services are primarily focused on, but not limited to, women during pregnancy and six months postpartum. Our team can assist with:

- Obtaining medicated assisted treatment
- Making referrals for mental health treatment
- Identifying connections to community-based services such as Early Intervention and WIC
- Offering support with DCF investigations and court requirements
- Securing housing
- Registering for SNAP benefits
- Developing recovery wellness plans
- Connecting to weekly groups such as Seeking Safety and The Nurturing Program
- Delivering peer-to-peer support

Moms Do Care

Department of Obstetrics and Gynecology
UMass Memorial Medical Center – Memorial Campus
119 Belmont Street, Worcester, MA 01605
508-334-8207